

SCALO EVENTI TORINO

MODERN  
VERSATILE  
WELCOMING  
SUSTAINABLE

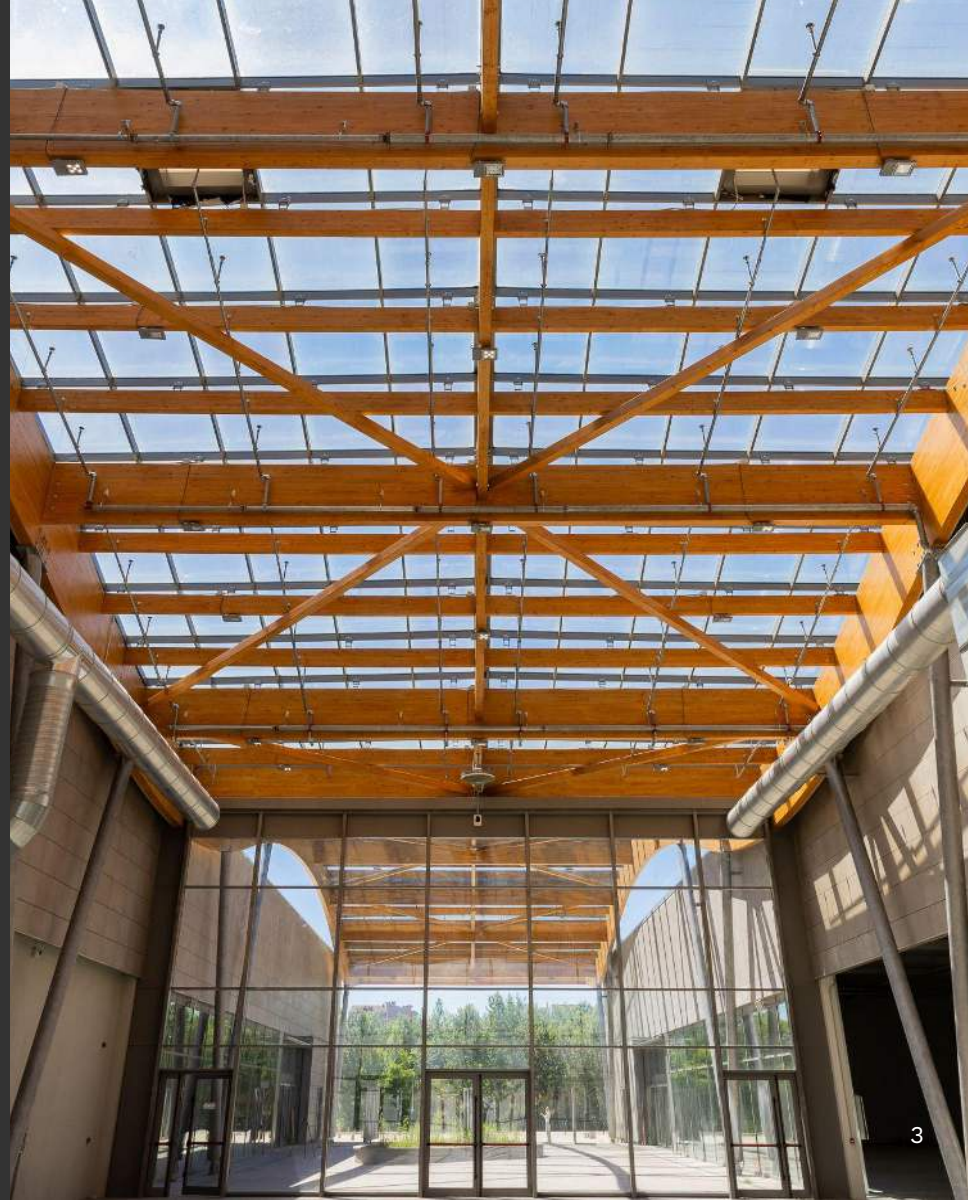




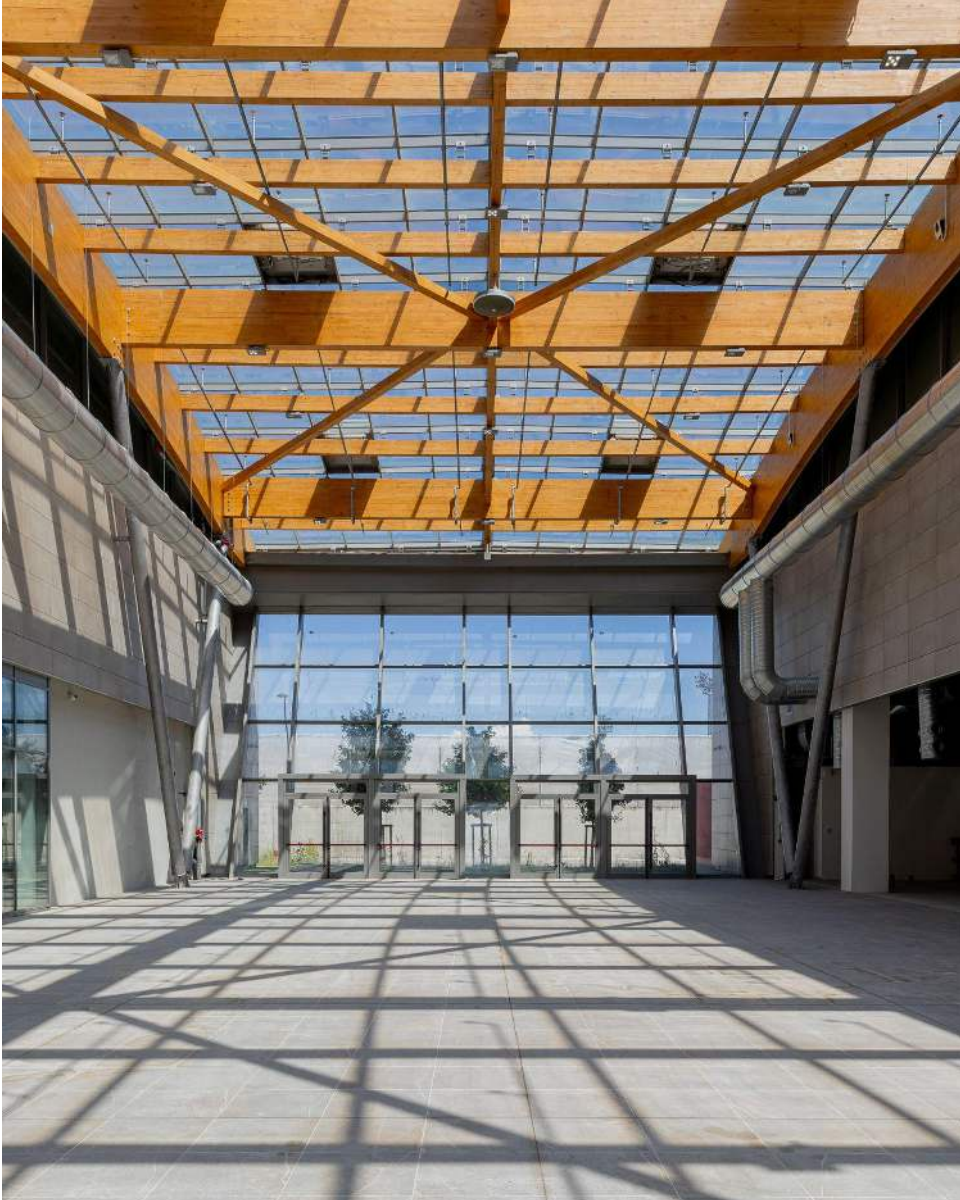
# TES

## Scalo Eventi Torino

is a new, versatile, and modern event location adjacent to the Stadium, ideal for corporate and public events, with a focus on sustainability and ease of use.







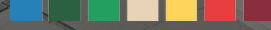
## THE SPACE

An area of 21,000 square meters that can be divided into multiple solutions, an urban setting designed to accommodate large flows of vehicles and people, a unique architecture where design and technology blend together.

## CAPACITY

Currently, SET can host up to 5,000 people in covered spaces, offering a wide and versatile space for events of all types and sizes, even small ones. Work is underway to expand the maximum capacity of the indoor spaces to 7,000-8,000 people.





**21.000** TOTAL SQM

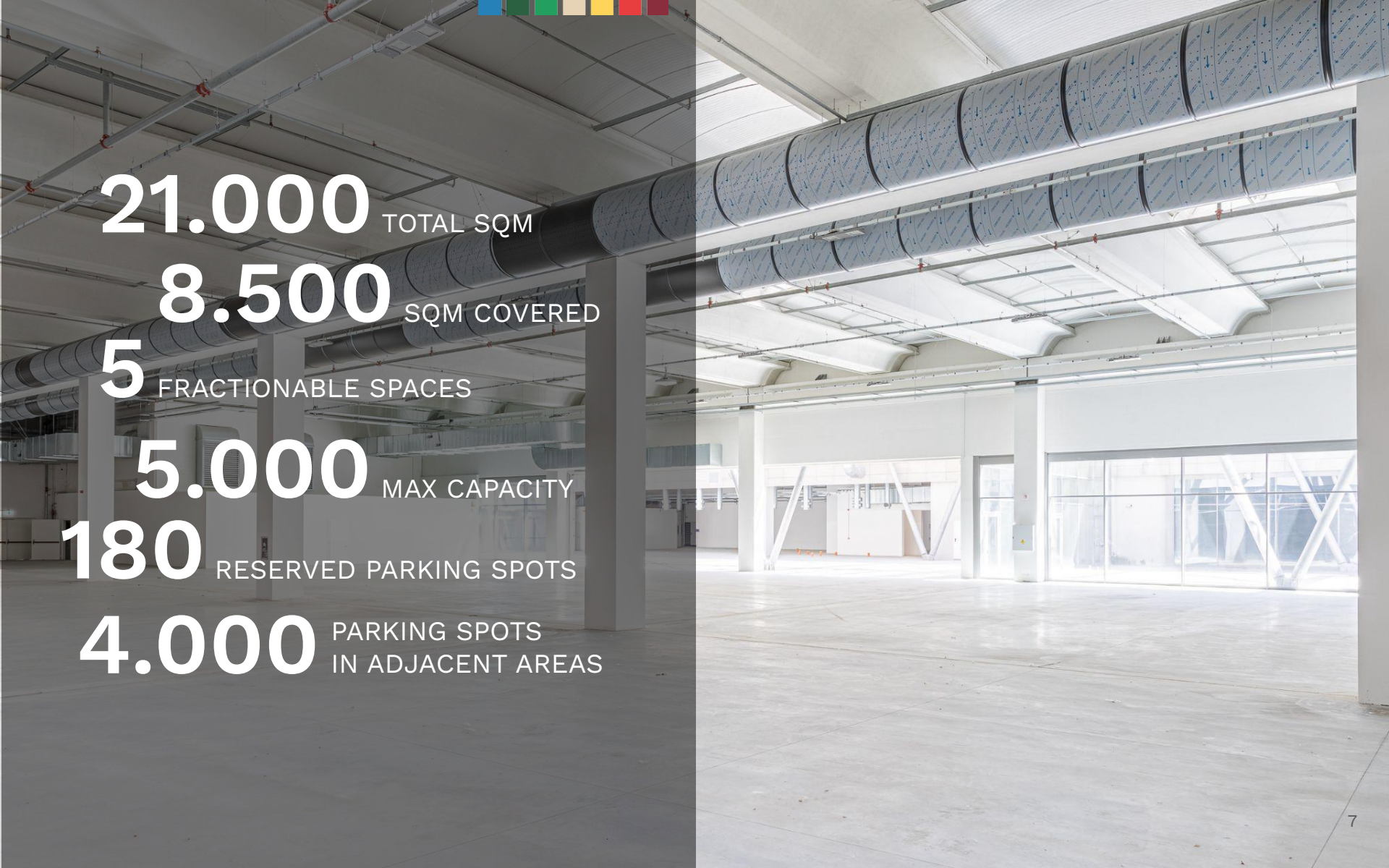
**8.500** SQM COVERED


**5** FRACTIONABLE SPACES

**5.000** MAX CAPACITY

**180** RESERVED PARKING SPOTS

**4.000** PARKING SPOTS  
IN ADJACENT AREAS





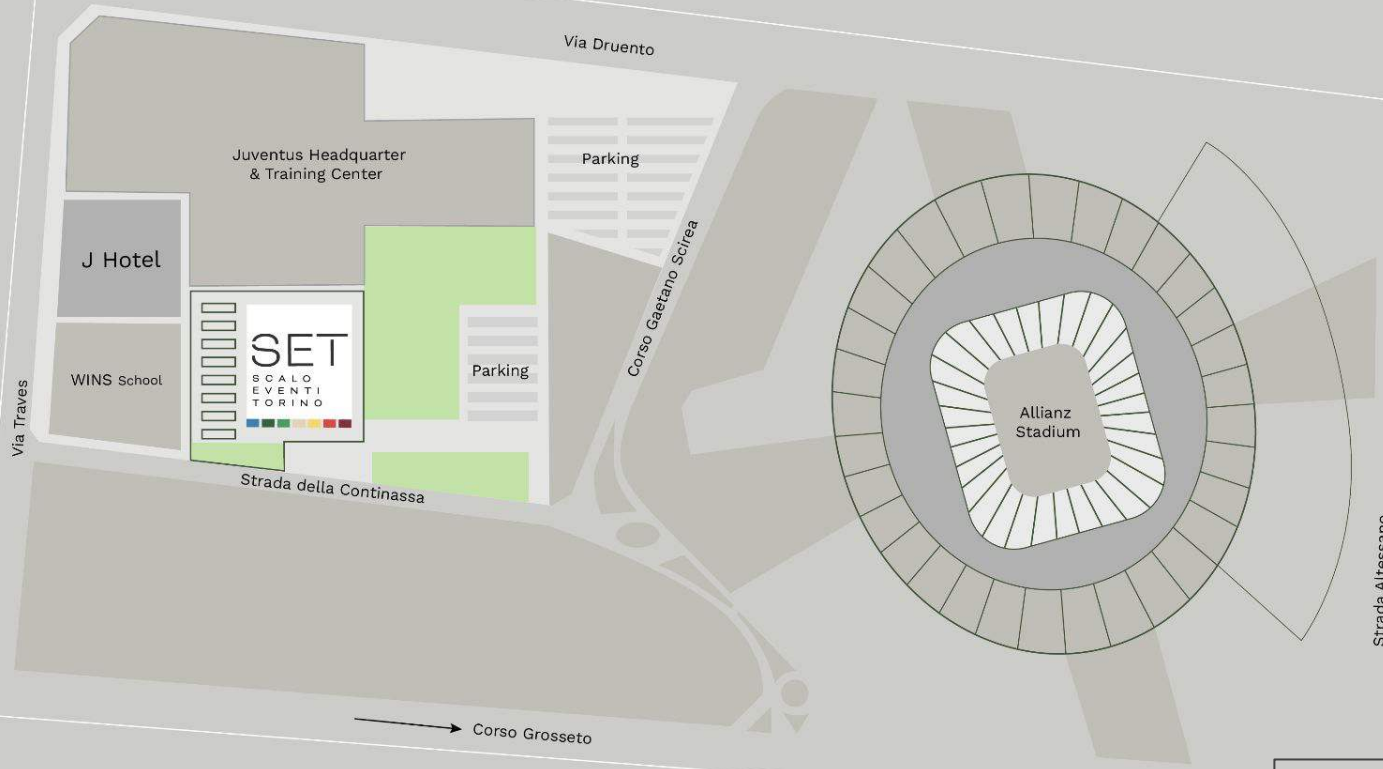
# THE SUSTAINABLE LOCATION

SET is located within an Energy Community, a private self-consumption collective owning an exclusive plant for renewable energy production from photovoltaic and high-efficiency district heating. This represents the most advanced system for responsible resource management: a concrete gesture of respect for the environment. Just as the systems were designed for maximum sustainability, processes have been initiated to integrate a certification system for waste management, a reward system for neighborhood personnel selection and hiring, CO2 credit purchase mechanisms, and those for obtaining ISO 20121 certification for sustainable event management. Although ongoing due to its recent opening, completed processes and those underway demonstrate a concrete commitment to long-term environmental and social sustainability practices. The focus on ESG (Environmental, Social, Governance) themes aims to ensure low-impact events, contributing responsibly to a greener future. For more details on ESG process progress, visit our website [www.scaloeventitorino.it](http://www.scaloeventitorino.it) or contact us today.



# URBAN CONTEXT

Northern Ring Road/Motorways



City Center

# HOW TO REACH US

Str. della Continassa 28 - Torino



The location is near the Northern Ring Road of Turin, "Venaria-Stadium" exit, easily accessible from the Milan-Turin motorway. The strategic position allows quick access for those arriving from the Milan-Venice axis.



**Turin-Caselle** Airport is connected to the Madonna di Campagna Station by a direct train running every half hour. The Madonna di Campagna Station is about 10 minutes from our location, making the airport transfer simple and quick.



From Madonna di Campagna Station, it is possible to reach Porta Susa Station, located in the center of Turin, in about 10 minutes. Our location is easily accessible from Porta Susa by public transport or taxi.

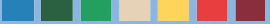


The area is well-served by public transport lines, ample taxi stands, bus stops, shared vehicle stands, and charging stations for electric vehicles.

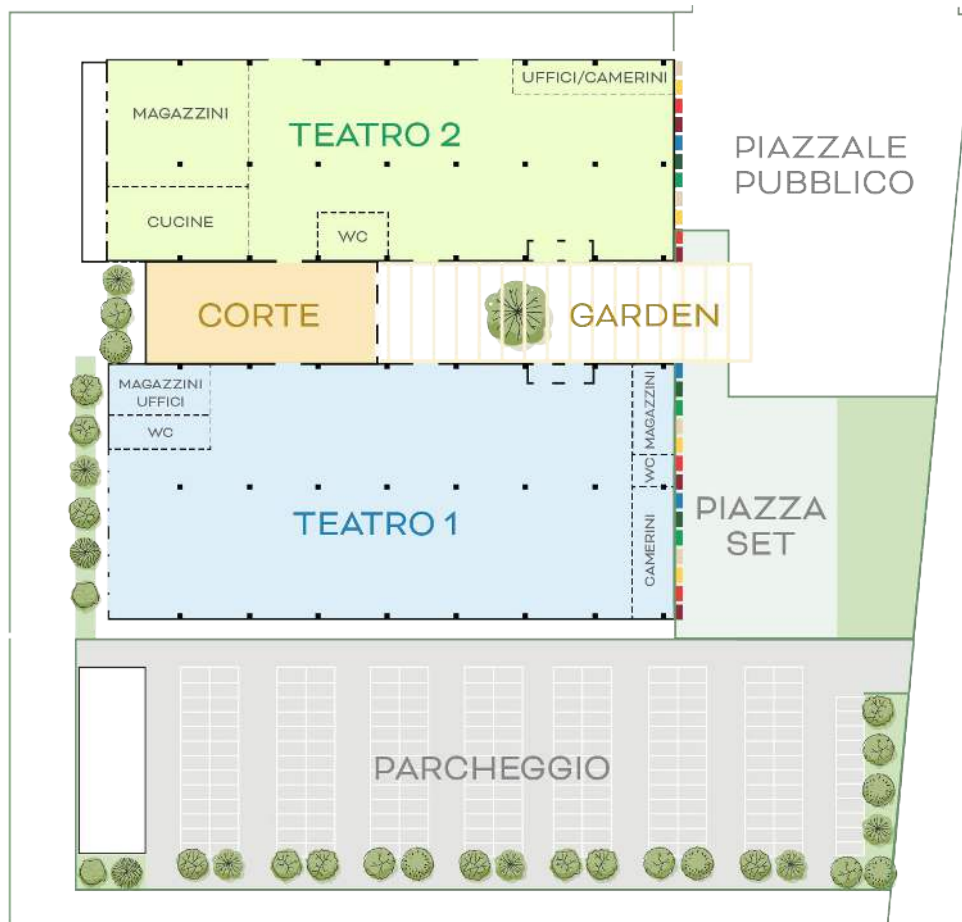
# LOGISTICS AND FLOWS

**Parking and Services:** The area hosts over 4,000 parking spaces, a 34,000 sqm commercial area, a 4-star business hotel with 106 rooms, numerous other budget accommodations, various restaurants, taxi stations, public services, green spaces, and wide streets in a particularly well-kept urban context.

**Access:** SET faces a large pedestrian plaza, ideal for comfortably accommodating incoming flows, with private car parking along the side facade. Trucks can circulate easily for loading/unloading.



# THE SPACES



## TEATRO 1

The largest space, 4,200 sqm with a current capacity of 2,500 people. It can be divided in various ways, equipped with a movable stage with pop-up dressing rooms, production offices, basic services, and provision for rigging and electrical distribution.

## TEATRO 2

3,400 sqm including warehouses, kitchen space, and offices, with a capacity of 1,000 people, a large window overlooking the Garden, and a 250 sqm photo backdrop.

## CORTE

The smallest but also the airiest space, 800 sqm with a glass roof at a height of 12 meters, with a double view of the outside.

## GARDEN

An open-air garden of 700 sqm surrounded by large windows from which all other spaces can be accessed, it is the entrance to the location and an ideal outdoor area for events in the good season.

## PIAZZA SET

Located outside the front of the building, it has a surface partly in concrete and partly in grass of 1,700 sqm totally free and usable for stage placement, coverings, or advertising structures without the need for administrative practices as it is a private space.

## PARCHEGGIO

180 outdoor reserved parking spaces including 8 electric charging stations.



# TEATRO 1

# TEATRO 1



## Measurements

- Total Area **4.200 m<sup>2</sup>**
- Dimensions **97 x 43 mt**
- Clear area **3.255 / 3.675 m<sup>2</sup>**
- Height **8,5 mt**
- Under-beam Height **7,5 m**

## Capacity

- Standing **2500**
- Seated Audience **2000**
- Dinner Seating **2000**

## Electrical Power

- **Medium voltage substation.**
- **Outlet blocks available:** 16A, 32A, 63A, and 125A around the perimeter and on the pillars

## Connectivity

- **High-speed WiFi Point AC**
- **Wired connection setup**

## Indoor Spaces

- **17 bathrooms** including 1 for disabled and 1 family bathroom.
- **4 rooms** for office/storage use, totaling 130 m<sup>2</sup>.

## Show setup

- **Removable stage** 16 x 10 meters, height 140 cm
- **Pop-up backstage** 325 m<sup>2</sup> with:
  - **2 large dressing rooms** 30 m<sup>2</sup> each, with private bathrooms
  - **7 rooms for production use** as dressing rooms/offices/storage, 16-20 m<sup>2</sup> each
  - **5 bathrooms** reserved for productions

## Preparedness for Hanging Installations

Capacity to support up to 500 kg per point.

## Climate Control

Air heating, cooling.

**Fire Safety** Smoke detection, smoke exhausts, sprinklers, hoses, and emergency exits (EVAC).





# TEATRO 2

# TEATRO 2



## Measurements

- Total Area **3.400 m<sup>2</sup>**
- Dimensions **97 x 35 m**
- Clear area **2.000 m<sup>2</sup>**
- Height **8,5 m**
- Under-beam Height **7,8 m**

## Capacity

- Standing **1000**
- Seated Audience **650**
- Dinner Seating **1200**

## Electrical Power

- **Medium voltage substation.**
- **20 Electrical Junction Boxes, Each with:** ognuno con tre 16A e una 16A/32A
- **Outlet blocks available:** 16A, 32A, 63A, and 125A around the perimeter and on the pillars

## Connectivity

- **High-speed WiFi Point AC**
- **Wired connection setup**

## Interior Spaces

- **8 bathrooms** 1 accessible and 1 family bathroom
- **2 dressing rooms** with private bathrooms
- **3 offices**
- 420 m<sup>2</sup> of **warehouse space**
- 250 m<sup>2</sup> of **semi-equipped kitchen area**
- **Staff changing rooms** with facilities and showers.

**Climate Control** Air heating, cooling.

**Fire Safety** Smoke detection, smoke exhausts, sprinklers, hoses, and emergency exits (EVAC).

**Preparedness for Hanging Installations**

Capacity to support up to 500 kg per point.







# CORTE



# CORTE

## Misure

- Total Area **820 m<sup>2</sup>**
- Dimensions **39 x 21 m**
- Clear area **680 m<sup>2</sup>**
- Height **9/12 m**
- Under-beam Height **8,5/11,5 m**

## Capacity

- Standing **600**
- Seated Audience **300**
- Dinner Seating **400**

## Electrical Power

- **Medium voltage substation.**
- **Outlet blocks available:** 16A, 32A, e 63A around the perimeter and on the pillars

## Connectivity

- **High-speed WiFi Point AC**
- **Wired connection setup**

## Dotazioni

- **17 bathrooms** including 1 for disabled and 1 family bathroom.
- **1 warehouse space**

**Climate Control** Air heating, cooling.

**Fire Safety** Smoke detection, smoke exhausts, sprinklers, hoses, and emergency exits (EVAC).





# GARDEN

# GARDEN



## Dimensioni

- Total area **700 m<sup>2</sup>**
- Clear area **650 m<sup>2</sup>**
- Dimensions **40 x 17 m**
- Height **9/12 m**
- Under-beam Height **8,5/11,5 m**

## Capacity

- Standing **450**

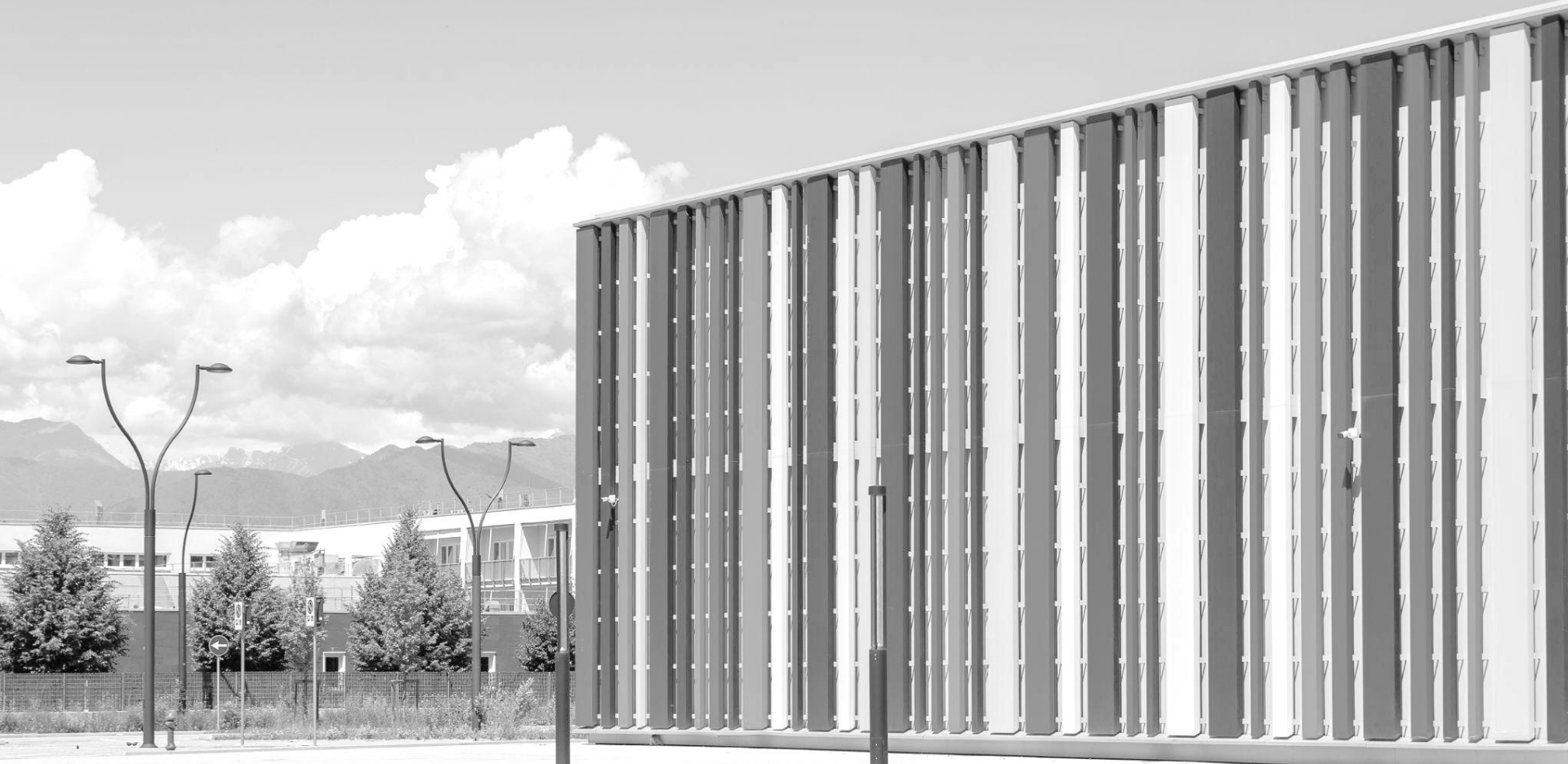
## Electrical Power

- **Outlet blocks available:** 16A and 32A around the perimeter and on the pillars

## Connectivity

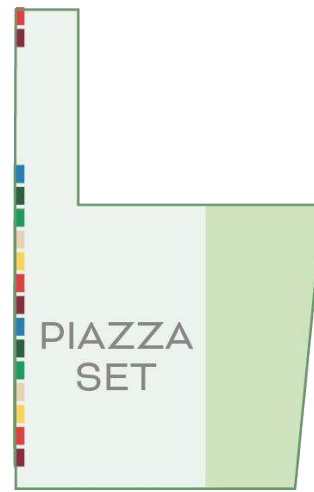
- Wired connection setup





# PIAZZA SET

# PIAZZA SET



## Measurements

- Total area **1.700 m<sup>2</sup>**
- Concrete Surface **1.110 m<sup>2</sup>**
- Lawn Area **580 m<sup>2</sup>**

## Occupation Permits

- Private area - no municipal occupancy permits

## Capacity and Access

- Earthworks with unlimited load capacity
- Accessibility for crane use

## Electrical Capacity

- Possibility to install power outlets upon request





PARCHEGGIO

# PARCHEGGIO



## Measurements

- Total area **6.600 m<sup>2</sup>**
- Dimensions **125 x 50 m**

## Capacity

- **180** reserved parking spaces

## Electrical Capacity

- **9** charging stations for electric cars





SET  
S  
Y  
H  
W

### **LOGISTICAL CONVENIENCE**

Only 20 minutes from the city center, SET is easily accessible even for those coming from outside via motorways, airport, and railway stations. The area's road network and parking are designed to comfortably host flows of thousands of people.

### **MODERN AND FLEXIBLE SPACES**

With its 8,400 sqm covered and fractionable, in addition to the outdoor space, SET offers a variety of solutions for organizing corporate events, shows, clubbing events, exhibitions, and shootings. The modern design of the architecture combines aesthetic research, technology, and functionality.

### **SUSTAINABILITY**

A location that has invested in renewable energy and operates active policies in defense of ESG values (Environment, Social, Governance) represents a responsible choice for those who want their event to be recognized as "low environmental impact".

### **COMPETITIVE COSTS**

Beautiful and incredibly livable, increasingly international, and capable of surprising even the most skeptical visitor, the city of Turin offers a unique opportunity to purchase high-standard services at a generally much lower cost than other cities.

### **PROFESSIONAL SUPPORT**

Long experience in the events sector guarantees dedicated and professional support in location management, facilitating the optimization of resources and time.





# EVENTS

SET is a modern and versatile structure, ideal for hosting fashion, art, design, culture, and entertainment events. It offers flexible spaces, which can be darkened or naturally lit, fractionable, and combinable in multiple configurations, perfect for corporate events, exhibitions, conventions, fairs, fashion shows, shootings, and video productions.



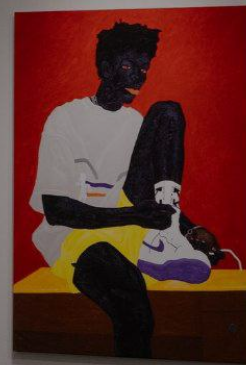
CONVENTIONS  
MEETINGS  
CONGRESS



MUSICAL EVENTS  
CLUBBING  
ONE-NIGHT  
SHOWS



FAIRS  
EXHIBITIONS  
EXPOSITIONS





# INSTITUTIONAL EVENTS



SET  
FOR PHOTO  
AND VIDEO  
SHOOTING



# ADDITIONAL SERVICES

In addition to space rental, SET can offer support to those who request it on a wide range of additional services:

- DESIGN AND FLOOR PLAN DEVELOPMENT
- LIGHTING, AUDIO, VIDEO BROADCASTING SERVICES
- GRAPHIC PRINTING
- SETUP AND SCENOGRAPHY
- FURNITURE RENTAL
- TECHNICAL AND SERVICE STAFF
- CATERING





SET  
SCALO EVENTI TORINO

SMART  
SPACES

**SET • Scalo Eventi Torino**

Strada della Continassa 28 - 10151 Torino

T. +39 3514250946

[scaloeventitorino.it](http://scaloeventitorino.it) - [info@scaloeventitorino.it](mailto:info@scaloeventitorino.it)

*SET is a location of*

**Smart Spaces s.b.r.l.** Società Benefit

Legal Address: Via Ottavio Revel 16 - 10121 Torino

P. Iva e Cod. Fisc. 13001710014